

**WORKING PAPER 1802**

# **The impact of financialisation on the wage share: a theoretical clarification and empirical test**

**Karsten Kohler, Alexander Guschanski and Engelbert Stockhammer**

**January 2018**



# **The impact of financialisation on the wage share: a theoretical clarification and empirical test**

**Abstract:** It is frequently asserted that financialisation has contributed to the decline in the wage share. This paper provides a theoretical clarification and a systematic empirical investigation. We identify four channels through which financialisation can affect the wage share: (1) enhanced exit options of firms; (2) rising price mark-ups due to financial overhead costs for businesses; (3) increased competition on capital markets and shareholder value orientation; and (4) the role of household debt in increasing workers' financial vulnerability and undermining their class consciousness. The paper compiles a comprehensive set of empirical measures of financialisation and uses it to test these hypotheses with a panel regression of 14 OECD countries over the 1992-2014 period. We find strong evidence for negative effects of financial liberalisation and financial payments of non-financial corporations on the wage share that are in the same order of magnitude as the effects of globalisation.

**Keywords** financialization, income distribution, political economy

**JEL classifications:** E25, F65

**Acknowledgements:** We gratefully acknowledge helpful comments by Ewa Karwowski, Glenn Lauren Moore, Rafael Wildauer and Niall Reddy on an earlier draft of this paper. All remaining mistakes are ours.

Karsten Kohler, Kingston University London, KT1 2EE, Kingston upon Thames, UK, e-mail: [k\\_koehler@ymail.com](mailto:k_koehler@ymail.com)

Alexander Guschanski, Greenwich Political Economy Research Centre, University of Greenwich, Park Row, London SE10 9LS, email: [a.guschanski@gre.ac.uk](mailto:a.guschanski@gre.ac.uk)

Engelbert Stockhammer, Kingston University London, School of Economics, History and Politics, Penrhyn Road, Kingston upon Thames, KT1 2EE, UK, email: [e.stockhammer@kingston.ac.uk](mailto:e.stockhammer@kingston.ac.uk)

## 1. Introduction

The last four decades have been characterised by drastic changes in the distribution of income between wages and profits. Figure 1 shows the average of the adjusted wage share<sup>1</sup> for 14 member states of the Organisation for Economic Cooperation and Development (OECD) from 1970 to 2014.<sup>2</sup> The wage share moves countercyclical because profits decline in recessions, while wage incomes are more stable due to fixed wage contracts. Noteworthy, however, is the long-term trend: between 1975, when the average wage share peaked at 72 % of gross domestic product (GDP), and 2014 there was a nine percentage point decline. In the same time period, we observe an ‘unprecedented expansion of financial activities, rapid growth of financial profits, permeation of economy and society by financial relations, and domination of economic policy by the concerns of the financial sector’ (Lapavitsas 2013, p. 3) – a phenomenon often dubbed ‘financialisation’, which has given rise to a substantial academic literature. Financialisation has many dimensions, including financial deregulation, securitisation, shareholder value orientation, and increasing household debt. Most studies on financialisation are concerned with its effects on firms’ investment decisions (Stockhammer 2004; Orhangazi 2008; Tori and Onaran 2017), corporate governance and employment (Lazonick and O’Sullivan 2000), the changing role of financial assets and liabilities for households (Hein 2012, chap. 5), and the implications of financial deregulation on financial stability (Lapavitsas 2009; Guttman 2016). The issue of income distribution is often touched upon, but rarely analysed systematically. Palley (2007)<sup>3</sup> and Lapavitsas (2013)<sup>4</sup> assert that financialisation has contributed to the decline in the wage share, but fail to identify mechanisms and do not provide econometric evidence. Hein (2015) presents the most elaborate theoretical discussion of the impact of financialisation on the wage share from a Kaleckian perspective. Jayadev (2007), Lin and Tomaskovic-Devey (2013), Alvarez (2015), Dünhaupt (2016), Wood (2017), and Stockhammer (2017) offer econometric evidence on the effect of financialisation on functional

---

<sup>1</sup> The adjusted wage share includes imputed payments of self-employed workers.

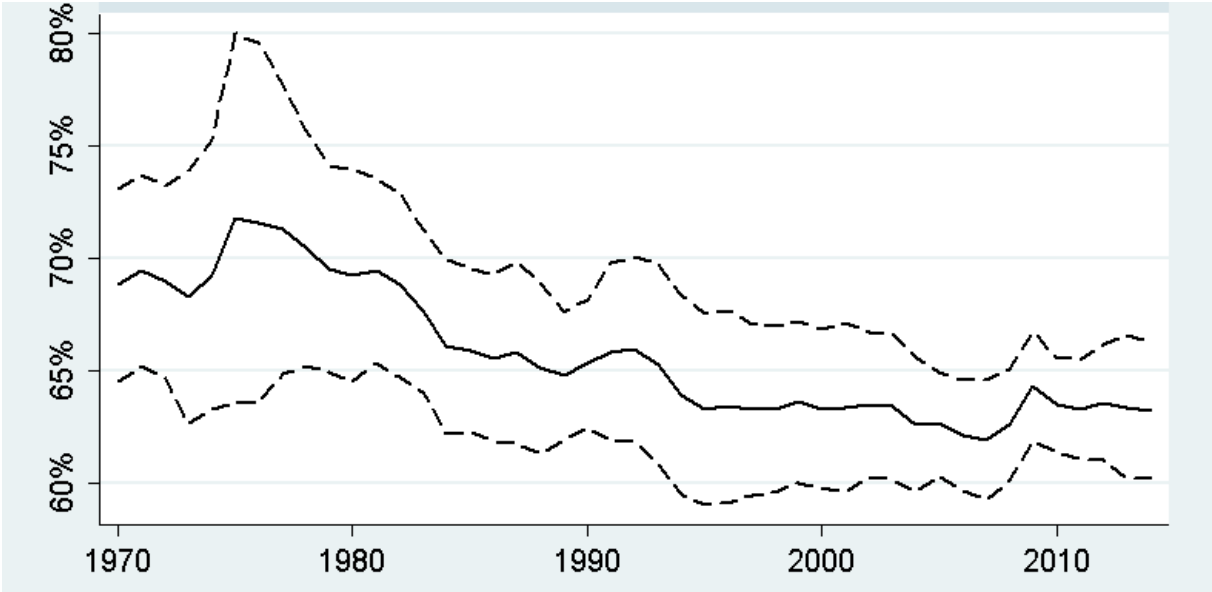
<sup>2</sup> Austria, Belgium, Denmark, Finland, France, Germany, Greece, Italy, the Netherlands, Portugal, Spain, Sweden, the United Kingdom, and the USA.

<sup>3</sup> “Economists have identified multiple factors behind the stagnation of wages and the growth of income inequality [...]. Those factors include the erosion of unions, the minimum wage, and labor market solidarity; globalization and trade; immigration; skill-biased technical change; and rising CEO pay [...]. However, such analysis tends to treat these factors as independent of each other. The financialization thesis maintains that many of these factors should be linked and interpreted as part of a new economic configuration that has been explicitly promoted by financial sector interests” (Palley 2007, p. 11-12).

<sup>4</sup> “The divergence between [labour productivity and hourly real wages] is a further indication of the worsening position of labour in the course of financialisation” (Lapavitsas 2013, p. 190).

income distribution.<sup>5</sup> However, these studies tend to focus only on one measure of financialisation, which does not do justice to its multidimensional character and runs the risk of omitting important channels. Using only a single measure of financialisation in regression analyses may be misleading, as the different dimensions of financialisation are likely to be correlated. Moreover, there are no cross-country studies that take into account the time period after the Great Recession (2009).

**Figure 1: Adjusted wage share, 1970-2014, (unweighted) average over 14 OECD countries**



Data source: AMECO.

Note: The solid line is the unweighted average wage share over 14 OECD countries. The dotted lines are the unweighted average plus/minus one standard deviation. The wage share is defined as the share of wage income in GDP at factor costs. The adjusted wage share includes the imputed income of self-employed workers.

The aim of this paper is theoretical clarification as well as empirical evaluation. We argue that financialisation affects income distribution by four different channels that require distinct empirical measures: (1) increased exit options for capital due to financial globalisation; this is based on models of bargaining in which exit options determine bargaining power. (2) Increased financial payments for non-financial businesses; this is based on mark-up pricing theories that postulate financial cost-sensitive mark-ups. (3) Increased competition on capital markets; this has been put forward by neo-Marxian authors and by the critical shareholder value literature.

---

<sup>5</sup> Some studies also analyse the effect of financialisation on measures of personal income distribution, such as the Gini coefficient (Kus 2012; Jaumotte and Buitron 2015), top income shares (Flaherty 2015; Jaumotte and Buitron 2015), and earnings dispersion (Lin and Tomaskovic-Devey 2013).

(4) Increased household debt; this is an under-theorised area, where heterodox economists and Cultural Political Economy have made contributions.

Hypotheses about the relation between financialisation and the wage share can be found in different theoretical approaches within heterodox Political Economy. It is not always possible to associate one hypothesis strictly to a single theoretical tradition. Bargaining power plays a role in Marxian and Kaleckian theory, but also in mainstream economics accounting for imperfect competition. Mark-up pricing is often associated with the work of Kaleckians, but can be found in post-Keynesian and Sraffian economics in general. Therefore, we prefer the term channel rather than 'theory' to distinguish the different hypotheses.

We have compiled a broad data set of financialisation variables for OECD countries. The empirical contribution of the paper is to econometrically test these four mechanisms with a panel analysis of 14 OECD countries for the period 1992 to 2014, and thus to assess the empirical validity of the theoretical channels through which financialisation impacts on functional income distribution. Thereby, the paper also contributes to our understanding of the causes behind the recent surge in inequality. Our main finding is that there are strong negative effects of financial liberalisation and financial payments of non-financial corporations on the wage share. Taken together, the effects of financialisation are in a similar order of magnitude as the effects of globalisation.

The paper is structured as follows: section 2 discusses theoretical hypotheses and summarises empirical studies about the effect of financialisation on functional income distribution. In section 3, the econometric method is outlined, and variable definitions and data sources are introduced. Section 4 presents econometric results and section 5 concludes.

## **2. Determinants of functional income distribution and financialisation: theoretical channels and empirical findings**

Financialisation has been first and foremost analysed within the heterodox theoretical tradition of Political Economy.<sup>6</sup> This approach starts from the assumption that power relations are

---

<sup>6</sup> Van der Zwan (2014) and Epstein (2015) provide summaries of the literature. Some neoclassical authors acknowledge the 'growth of finance' (Greenwood and Scharfstein 2013), but do not use the concept of financialisation. Admati (2017) is a recent exception, who discusses negative effects of financialisation on corporate governance and economic stability.

pervasive in production and market exchange. The distribution of income between profits and wages should thus be regarded as the outcome of power relations rather than technology as in pure neoclassical theory. In formal bargaining models firms are assumed to operate in oligopolistic markets in which they can appropriate rents whose distribution depends on the relative bargaining position of firms and workers (see the short-run model in Blanchard and Giavazzi, 2003, for a representative piece of a sizeable literature). Both sides have an interest in concluding the negotiations and the split of the value added will depend on the exit options of the parties. For example an increase in unemployment benefits would improve the exit options and thereby the bargaining power of workers, and real wages would rise. If the elasticity of substitution between capital and labour is less than one, a rise in wages would increase the wage share.<sup>7</sup> Bargaining power is thus a concept that is consistent with Marxian and some versions of Kaleckian and Sraffian theory, but also with the non-market clearing versions of neoclassical and New Keynesian economics. However, mainstream versions of bargaining theory, such as Blanchard and Giavazzi (2003), typically assume that in the long-run there is a fully elastic supply of firms that are eager to enter the market, which will eventually drive profits down and shift the wage share back to its previous level. This view basically re-establishes the market-clearing approach to distribution in the long-run and is not shared by heterodox Political Economy, in which imperfect competition is considered a structural feature of capitalist economies.

We identify four theoretical hypotheses on the effect of financialisation on the wage share in the Political Economy literature: (1) enhanced exit options of capital due to financial globalisation; (2) rising pricing mark-ups due to financial overhead costs for firms; (3) increased competition on capital markets and shareholder value orientation; and (4) the role of household debt in increasing workers' financial vulnerability and undermining their class consciousness

## **2.1 Financial globalisation and the exit options of capital**

Models of bargaining have originally focused on labour market institutions (LMI) to explain the decline in the wage share (e.g. Blanchard and Giavazzi, 2003). Darcillon (2015) shows that financialisation partly explains the erosion and decentralisation of trade union density,

---

<sup>7</sup> Rowthorn (1999) summarises evidence that the elasticity of substitution is less than one.

employment protection legislation, and bargaining coverage. In his view shareholder value orientation and short-termism change industrial relations towards a more deregulated and less unionised labour market.

Several contributions claim that financialisation also directly affects bargaining power as it increases the exit options for capital. Financial liberalisation during the 1980s and 1990s and thus higher capital mobility is regarded as one of key developments of financialisation (ILO 2008, chap. 2; Stockhammer 2013). Harrison (2002) and Jayadev (2007) argue that increasing capital account openness has contributed to the declining wage share through worsening labour's bargaining power due to capital's increased ability to relocate production. The power struggle in this channel takes place between industrial capital and workers. Harrison (2002) reports a positive effect of capital controls on the wage share for a sample of over 100 countries between 1962-1997. In a similarly large panel over the period 1972-1995, Jayadev (2007) finds that capital account openness exerts a statistically significant and robust negative effect on the wage share. The ILO (2008, pp. 50-52) has linked a *de facto* measure of financial globalisation, foreign assets plus foreign liabilities as a share of GDP, to a declining wage share through an erosion of workers' bargaining power vis-à-vis capital. This hypothesis has been empirically investigated by Stockhammer (2009, 2017) and the ILO (2011, chap. 3). Stockhammer (2009) analyses the effects of financial globalisation, trade globalisation, and labour market institutions but also technology variables for a sample of 15 OECD countries over the period 1982-2003. The negative effect of financial globalisation is statistically significant in a within-estimation with 5-year averages, but statistically insignificant in a first difference estimation. ILO (2011, chap. 3) reports statistically significant negative effects of financial globalisation on the wage share for a sample of 16 high-income countries over the 1981-2005 period. Stockhammer (2017) offers an analysis for a broader sample of 71 developing and advanced countries for the time period 1980-2000. He finds that financial globalisation and trade openness have the strongest negative effect on wage shares. Lastly, IMF (2017, chap. 3) reports a negative effect of financial globalisation on the wage share in a sample of 49 countries between 1991-2014.

Some authors suggest a different channel how financialisation enhances the exit options of capital. Lin and Tomaskovic-Devey (2013) present an econometric study with industry level data for the USA (1970-2008). Their central financialisation variable is the ratio of financial receipts of non-financial corporations (including interest income, dividends, and capital gains)

to business receipts, which is supposed to capture firm's ability to make profits without employing workers. They find that 'increased dependence on earnings through financial channels tends to decrease labor's share of total income in the long run' (Lin and Tomaskovic-Devey 2013, p. 1306). Alvarez (2015) is one of the few papers that estimate the wage share using French firm-level data. He employs two financialisation variables of which one, net financial income (including interest income, dividends, and capital gains), is discussed within a bargaining framework similar to Lin and Tomaskovic-Devey's argument. He finds a robust negative impact of net financial income on the wage share in all specifications. Table 1 gives an overview of the existing econometric studies that investigate the effect of financialisation on functional income distribution.



**Table 1: Econometric studies on financialisation and functional income distribution**

Study	Dependent variable	Main explanatory variables		Estimation Methods	Sample	Findings for financialisation variables
		Financialisation	Non-financialisation			
Harrison 2002	WS	CAPCON	KL, Y, FX, OPEN, CC, GC, FDI	FE; IV; 5YA; long-diff	N > 100 T: 1960-1997	CAPCON: positive & significant
Jayadev 2007	WS	CAO, LRIR	TXT, OPEN, CC, GC	FE;5YA	N > 100 T: 1972-1995	CAO: negative & significant LRIR: positive & significant
Stockhammer 2009	WS	FINGLOB, LRIR	ICT, KL, OPEN, TW, UD, PMR, EPL, TOT, BRR, INV	5YA (with FE);5YA (with FE2); FD	N = 15 T: 1982-2003	FINGLOB: negative & significant
ILO 2011	WS	FINGLOB	KL, OPEN, UD, BRR, TW, EPL, YW, OW, Y, FX, LRIR	FE	N = 16 T: 1981-2005	FINGLOB: positive & significant
Hein and Schoder 2011	PS	INTPAY	U, CPI, GRW	ADL (in FD)	1. N = 1 (USA) T: 1963-2007 2. N = 1(GER) T: 1963-2007	INTPAY: positive & significant
Lin and Tomaskovic-Devey 2013	WS	FI	UD, CI, COL, WW, ICE, SI, DEPR, IMP	ECM (with FE2)	1. N = 35 (Industry-level data, USA) T: 1970-1997 2. N = 40 (Industry-level data, USA) T: 1998-2008	FI: negative & significant
Alvarez 2015	Compensation of employees	INTPAY, FININC	FA, EXREV, E, VA, EBIT	FE; FD	N = 6980 (firm-level) T: 2004 – 2013	INTPAY: negative & significant

	over total assets					FININC: negative & significant
Dünhaupt 2016	WS	DIVPAY, INTPAY	OPEN, FDI, PM, U, UD, STR, GC	FE2; FD	N = 13 T: 1986 – 2007	DIVPAY, DIVPAY+INTPAY: negative & significant INTPAY: negative & insignificant
IMF 2017 (chap. 3)	WS	FINGLOB	PC, INIT, OPEN, GVC; UD; TXC; EPL; PMR	long-diff (with FE); 5YA (with FE)	N=50 countries N=129 (sectors) T; 1991-2014	FINGLOB: negative & significant for country-level estimation
Stockhammer 2017	WS (Private Sector)	FINGLOB	ICT, KL, OPEN, TOT, GC, UD, GRW	FE; FD; 5YA; GMM	N = 28 T: 1980-2000	FINGLOB: negative & significant

*Abbreviations of variables:* BRR: benefit replacement rate; CAO: capital account openness; CAPCON: capital controls; CC: currency crisis; CI: computer investment; COL: college education among workers; DEPR: depreciation of non-financial companies to total depreciation; DIVPAY: dividend payments; E: employment; EBIT: earnings before interest and taxes; EPL: employment protection legislation; ESI: employment size in industry; EXREV: export revenues; FA: fixed assets; FDI: foreign direct investment; FI: financial income to business income; FINGLOB: Financial globalisation; FININC: financial income; FX: foreign exchange rate; GC: government consumption; GRW: GDP growth; GVC: global value chain linkages; IC: industrial concentration; ICT: information and computer technology; INIT: initial exposure to routinization; IMP: import penetration; INTPAY: interest payments; INV: investment rate; IR: interest rate; KL: capital-labour ratio; LRIR: long-term real interest rate; OPEN: trade openness; OW: old workers to labour force; PC: Relative price of investment (capital deflator/ CPI); PM: import prices; PMR: product market regulation; PS: profit share; STR: strikes; TOT: terms of trade; TW: tax wedge; TXT: taxes on trade; TXC: corporate tax rate; U: unemployment rate; UD: union density; VA: value added; WR: wage rate; WS: wage share; WW: non-Hispanic white workers to labour force; Y: GDP per Worker; YW: young workers to labour force

*Abbreviation of econometric methods and sample properties:* 5YA: 5 year averages; ADL: auto-regressive distributed lag model; ECM: error correction model; FD: first difference estimator; FE: within estimator (cross-section fixed effects); FE2: cross-section and period fixed effects; FGLS: feasible generalised least squares; GLS: generalised least squares; GMM: generalised method of moments; long-diff: long-term annualized changes between 10 years or more; IV: instrumental variable estimation using lags as instruments; N: number of cross-sections; OLS: ordinary least squares; T: time period

## **2.2. Financial payments of non-financial companies (NFC) and mark-up pricing**

The idea that firms set prices based on unit costs plus a mark-up is prevalent in heterodox economic thought. In particular contemporary Kaleckians (Hein 2015) have argued that financialisation affects the wage share because financial payments by non-financial businesses constitute financial overhead costs that may lead to an increase in the mark-up entrepreneurs charge on unit costs. Kalecki (1969) assumed that firms operate in oligopolistic markets in which they charge a mark-up in accordance with the degree of monopoly. A rise in the mark-up will increase prices, reduce real wages and thereby increase the profit share. He also mentioned the possibility that the mark-up rises with increasing overhead costs (*ibid.*, pp. 17-18). Hein (2015) argues that if the mark-up is elastic with respect to interest and dividend payments, a rise in these financial overhead costs will decrease the wage share. This argument is also consistent with Sraffian theory and other theories of cost-pricing. Notably, it presupposes that firms possess the power to raise the mark-up in response to an increase in overhead costs. Financialisation can increase financial overhead cost due to shareholder value orientation, which pressures firms to maintain rising share prices (Lazonick and O'Sullivan 2000). In order to achieve this aim, firms may increase the dividend payout ratio or take on debt to buy back shares. As a result, interest and dividend payments would increase. This channel thus assumes a power struggle between rentiers and industrial capitalists that is eventually being resolved at the expense of workers.

This argument has motivated three econometric studies. Hein and Schoder (2011) estimate an autoregressive distributed lag model for the USA and Germany between 1963 and 2007 and report a weakly significant (at the 10% level) positive impact of net interest payments on the profit share. Dünhaupt (2016) regresses the wage share on net dividend and interest payments of non-financial corporations using a panel of 13 OECD countries over the period 1986-2007. She finds a strong and statistically significant negative impact of dividend payments, whereas the coefficient on interest payments is negative but statistically insignificant. Alvarez (2015) uses interest payments as an explanatory variable and finds a negative effect on the wage share in France.

## **2.3. Increased competition on capital markets and shareholder value maximisation**

The emergence of a market for corporate control has been discussed in the mainstream and in the financialisation literature. For example, Lazonick and O'Sullivan (2000) argue that with the

rise of shareholder power firm strategies have shifted from ‘retain and reinvest’ to ‘downsize and distribute’, with a focus on short-term capital gains at the expense of long-term investment. This argument has been formalised (Stockhammer 2004; Dallery 2009) in order to analyse changes in investment behaviour. The distributional consequences of shareholder value maximisation have received less attention and empirical research has so far focussed on the impact on investment (Stockhammer 2004; Orhangazi 2008; Demir 2009; Tori and Onaran 2017). There is also a mainstream version of the argument (Jensen and Meckling 1976; Jensen 2001) that endorses shareholder value orientation because it would improve efficiency.

Some neo-Marxian authors (Martin et al. 2008; Bryan et al. 2009; Sotiropoulos and Lapatsioras 2014) suggest that the process of securitisation and increased trading of financial assets affects the internal organisation of production. Financialisation has increased the pressure on firms as capital markets have become more competitive - with negative effects for workers. The process of securitisation and derivative trading of short-term oriented financial investors led to an increasing importance of the valuation of firm securities on secondary markets. A ‘capitalist firm that goes to the markets to raise funds acquires a risk profile which depends to a significant extent on its ability to pursue effective exploitation strategies in a competitive economic environment’ (Sotiropoulos and Lapatsioras 2014, pp. 94-95). Through the pricing of financial assets the economic efficiency of a firm becomes objectively quantified and hence commensurable with other monetary prices. This puts firms under pressure to guarantee an appreciation of their stocks (Bryan et al., 2009). As the price of securities is a function of the internal efficiency of the firm, this process will induce ruthless cost-cutting, especially wage suppression, but also intensification of work (Lapavitsas 2009, p. 125). This argument is related to Lazonick and O’Sullivan (2000) but here the change in manager behaviour is induced by the forces of competition rather than shareholder value orientation. Similar to the mark-up pricing channel, the primary conflict is between rentiers and firms, but it is being settled at the expense of workers.

Within a Marxian framework the argument that increased short-termism and competition in capital markets leads to an increase in the profit rate and exploitation raises some issues. The argument implies that capitalists did not exploit workers to the extent that they could have prior to securitisation. This presupposes that industrial capitalists were not profit maximising, i.e. did not make full use of their bargaining power. While the corporate governance literature is

explicit about this and argues that the shareholder value revolution has unsettled a balance between stakeholders and shareholders that had been more favourable to workers,<sup>8</sup> it is difficult to find similar statements in the neo-Marxian literature. Importantly, there are as of yet no econometric studies to substantiate the effects of increased competition on capital markets.

## **2.4 Rising household debt**

In the wake of the financial crisis rising household debt has gained prominence. Several authors (Barba and Pivetti 2009; Frank et al. 2014; Stockhammer 2015; Cynamon and Fazzari 2016) have claimed that distributional changes and household debt are related, but that causality goes from distribution to debt. Barba and Pivetti (2009) and Stockhammer (2015) argue that as wages fell workers tried to maintain consumption levels through debt financing. Frank et al. (2014) as well as Barba and Pivetti (2009) argue that as personal income inequality increased, poor households tried to keep up with richer households and thus ran into debt.

There is only little systematic work on the effects of working class indebtedness on the wage share. Panico et al. (2012) present a two-class model with a banking sector to analyse the distributional consequences of increasing debt-financed workers' consumption due to easier access to credit. In the model, the profit share increases when the rate of growth of loans to workers exceeds the rate of growth of total wages. The authors conclude that 'an expansion of the banking industry [to lend to workers] affects the income shares, even if the rate of profit and wages remain constant' (Panico et al. 2012, p. 1467). However, this statement is misleading. The crucial assumption in the argument is not lending per se, but the increase of autonomous working-class consumption. An increase in borrowing that does not affect consumption (e.g. buying a house) would not affect distribution.<sup>9</sup> It is not the level of household debt that matters, but the exogenous increase in consumption relative to income. Changes in debt are the outcome, not the cause of the process. Thus the model does not provide a sufficient foundation for analysing how household debt affects functional income distribution.

---

<sup>8</sup> Jensen and Meckling (1976) explicitly argue from a principal-agent point of view that firms were inefficient.

<sup>9</sup> Most credit to households is mortgage credit and related to asset transactions (e.g. Figure 2 in Cynamon and Fazzari, 2016, for the USA).

Bryan et al. (2009, p. 470) and Barba and Pivetti (2009, p. 127) offer various hints that working-class indebtedness may affect working class power, but no thorough analysis.<sup>10</sup> The Cultural Political Economy literature argues that financialisation has not so much changed the relations between existing social actors, but that it constructs ‘investor identities’, i.e. it transforms agents’ perceptions of their identities and their interests (e.g. Langley 2007). Without referring to this theoretical approach, Fligstein and Goldstein (2015) find in an empirical study of about 4000 US-households between 1989 and 2007 that it was above all the middle and upper middle class that has embraced a new ‘finance culture’ expressed by a higher willingness to take on risk through financial investment and to borrow money to sustain a high level of consumption. It could be argued that a working but individualised middle class that focuses on financial income streams, portfolio management, and debt-financed consumption is less likely to engage in collective action to fight for higher wages.

There is also an empirical literature on financial vulnerability, which refers to the financial incapacity of households to cover monthly expenses of basic consumption, the inability to meet unexpected payment obligations, and accumulation of arrears (Anderloni et al., 2012). The authors develop an index of financial vulnerability using a sample of 4000 Italian households in 2009 and find statistically significant positive effects of the level of debt servicing on financial vulnerability. The study does not link the finding to class relations, but the impact of financial vulnerability on class struggles is immediate if we assume that class consciousness contributes to working class militancy. Working class households and university graduates might be worried about their access to credit and about the repercussions of personal bankruptcy, and therefore eager to service their debt. This can make them reluctant to join industrial action that might cost them their job. Kim et al. (2017) integrate this channel into a Kaleckian macro model in which higher indebtedness reduces worker’s bargaining power as it increases the cost of job loss. They argue that the resulting increase in inequality may induce workers to take on even more debt, which can give rise to a vicious cycle of household debt and inequality. The argument is consistent, but incomplete as workers typically hold assets (for

---

<sup>10</sup> Bryan et al. (2009, p. 470) argue that the rise in household debt increased the ‘likelihood of each household offering more workers to the market and each worker’s commitment to deliver productivity growth and longer working weeks as the condition of meeting her own costs of subsistence’. However, no further explanation is offered why households would do that rather than, say, default on their debt, or demand higher wages. Similarly, Barba and Pivetti (2009, p. 127) state that ‘the burden of servicing their debt pushes [workers] [...] to work harder and for longer hours [...] thereby contributing to the persistence of low wages and labour costs’.

example a house) as well. In this channel, the power relation is thus between banks and households, but may spill over to industrial conflicts.

Wood (2017) and Guschanski and Onaran (2016) are the only studies that investigate the effect of household debt on the wage share. Wood (2017) finds a negative effect of mortgage debt in Great Britain and the USA, but no effect in Sweden and Denmark for the period 1979-2012. Guschanski and Onaran (2016) find a negative effect of household debt (measured at the country level) on sectoral wage shares in Austria, Great Britain, and the USA between 1970-2010. However, they do not find evidence in estimations with a pool of all countries, suggesting that the effect is country dependent.

## **2.5 Other determinants of the wage share: labour market institutions, globalisation and technology**

The wage share will also be influenced by factors other than financialisation. In line with the Political Economy approach to income distribution, Kristal (2010) distinguishes three fields of workers' bargaining power: organisational power in the economic sphere, which she operationalises by union density and strike activity; organisational power in the political sphere, which is measured by the political orientation of government and social spending; and structural power in the global sphere approximated by the import shares, migration and FDI. Positive effects of union density on the wage share were found by Kristal (2010), ILO (2011), Stockhammer (2009; 2017) and Guschanski and Onaran (2017). Other labour market institutions that affect the exit options of workers are employment protection legislation, minimum wages, unemployment benefits, and bargaining coverage. However, these variables have produced mixed results in previous studies.<sup>11</sup>

Many studies link a strengthening of firms' bargaining power to globalisation via foreign direct investment and offshoring. For example Choi (2001) uses a Nash bargaining model to analyse the bargaining relationship between unionised workers and a multinational firm that has the option of outsourcing production via foreign direct investment (FDI) and finds a negative relation between FDI and wages. In an empirical study with over a hundred countries over the

---

<sup>11</sup> EC (2007) finds a positive effect of minimum wages on the wage share, but an unexpected negative effect of unemployment benefits and employment protection legislation. Likewise, the IMF (2007) reports a negative effect of unemployment benefits. Stockhammer (2017), on the other hand, does not find statistically significant effects of these variables.

1960 to 1997 period, Harrison (2002) fails to find robust effects of outward FDI on the wage share, although there is evidence for a negative effect of inward FDI. Guschanski and Onaran (2017) find a negative effect of offshoring to Global South countries on the sector level wage share in 14 OECD countries over the period 1995-2007.

IMF (2017, chap. 3) suggest that *de facto* financial globalisation can reduce the relative price of capital, which would increase the wage share if the elasticity of substitution is smaller than one. However, their finding of a negative impact of financial globalisation for advanced economies suggests that either the elasticity of substitution is above one or that the negative effect is due to the bargaining channel discussed above.

Mainstream economists have put forward an explanation of the declining wage share that refers to skill-biased technical change in the context of globalisation without taking financialisation into account. In a neoclassical framework, factor incomes are determined by their marginal productivity. Skill-biased technical change has caused substitution of low-skilled workers by machines, especially for routine tasks that are easily automatized. The effect of this process on the wage share depends on the elasticity of substitution between capital and labour. If the elasticity is above one, as is usually assumed for low-skilled workers, the effect will be negative. Conversely, the effect can be positive for high-skilled workers. If the latter effect outweighs the former, the aggregate wage share declines. Globalisation accelerates this process through international specialisation, which is especially harmful for low-skilled workers in developed countries, while it simultaneously increases the global labour supply and facilitates offshoring. These hypotheses are empirically investigated by the EC (2007, chap. 5), IMF (2007, chap. 4), and Bassanini and Manfredi (2012) by means of panel analysis but neither of these studies controls for financialisation variables.

## **2.6 Summary**

We have identified four distinct mechanisms by which financialisation can affect the wage share and tried to clarify their theoretical foundations. First, bargaining models argue that financialisation has increased the exit options for corporations and thereby enhanced their bargaining power vis-à-vis workers. Second, contemporary Kaleckians maintain that financial payments such as interest and dividend payments constitute overhead costs for firms, which will increase their mark-up. Third, competitive pressures on firms due to securitisation and



financial trading can lead to wage suppression and intensification of work. This has been highlighted by Marxian writers on financialisation and by the critical stream of the shareholder value literature. Fourth, increasing financialisation of households, in particular the rise of household debt, may have increased the financial vulnerability of working-class households and undermined working-class consciousness by establishing a self-perception of households as financial managers. This may have weakened labour vis-à-vis capital. All of these channels are grounded in heterodox Political Economy; neoclassical economics is notably absent from these debates as it has highlighted skill-biased technical change and globalisation, and has so far not included financialisation. An exception is IMF (2017, chap. 3) which has suggested that financial globalisation can reduce the wage share via a reduction in the relative price of capital, if the elasticity of substitution is larger than one. However, this channel is not related to a change in bargaining power.

Table 2 gives an overview of the mechanisms by which financialisation affects income distribution (column 1), their theoretical foundation (column 2), and power relations that are being highlighted (column 3). It also matches the existing econometric panel studies (column 4) and their empirical measures (column 5), and lastly indicates the empirical measures that we will be using (column 6). There is a notable asymmetry in the empirical attention that the different mechanisms have received. Bargaining power models and the exit option of capital, as well as the hypothesis of financial overheads and flexible mark-ups have motivated a few studies. So far there are two studies investigating the effect of household debt on the wage share, while the competitive pressures on capital markets has not given rise to econometric investigations.

**Table 2: Channels linking financialisation and the wage share**

<b>Channel</b>	<b>Theoretical origin</b>	<b>Main power relation between:</b>	<b>Theoretical and empirical studies</b>	<b>Empirical measures used</b>	<b>Proposed measures</b>
Enhanced exit options for NFCs	Models of bargaining	Firms and workers	Harrison (2002); Jayadev (2007); Stockhammer (2009, 2017); ILO (2011); Lin and Tomaskovic-Devey (2013); Alvarez (2015); IMF (2017, chap. 3)	Financial openness ( <i>de jure</i> )  Financial globalisation ( <i>de facto</i> )  Financial profits of NFCs to business profits	Financial openness ( <i>de jure</i> )  Financial globalisation ( <i>de facto</i> )  Financial income of NFCs
Increasing financial overhead costs for NFCs and elastic mark-ups	Cost-plus pricing theories	Rentiers and firms	Hein and Schoder (2011); Hein (2015); Alvarez (2015); Dünhaupt (2016)	Net interest payments of NFCs  Net dividend payments of NFCs	Net financial payments of NFCs
Increased competition on capital markets puts pressure on NFCs	Shareholder value literature	Rentiers and firms; firms and workers	Martin et al. 2008; Bryan et al. 2009; Sotiropoulos and Lapatsioras 2014		Stock market turnover
Household debt and financial vulnerability of workers	Cultural Political Economy and heterodox macroeconomics	Banks and workers; workers and firms	Panico et al. (2012); Kim et al. (2017); Guschanski and Onaran (2016); Wood (2017)	Mortgage debt  Household debt	Household debt

Our objective is to assess the relevance of different channels, but these are likely to be interrelated.<sup>12</sup> For example, financial openness can increase competition on capital markets. Different measures of financialisation might constitute intervening variables with respect to each other, thus we control for all channels simultaneously, as estimations with individual variables might conceal the precise channel at work.

### 3. Variables and econometric method

#### 3.1 Regression equation and variable definitions

In order to test the four hypotheses regarding the effect of financialisation on the wage share, the following equation is estimated:

$$(1) \quad WS_{i,t} = a_i + b_1 FIN_{i,t}^{EXIT} + b_2 FIN_{i,t}^{NFCPAY} + b_3 FIN_{i,t}^{CAPCOMP} + b_4 FIN_{i,t}^{HHD} + b_5 U_{i,t} \\ + b_6 UD_{i,t} + b_7 OPEN_{i,t} + b_8 ICT_{i,t} + b_9 GRWTH_{i,t} + \varepsilon_{i,t}$$

where subscript  $i$  stands for cross-sections,  $t$  represents the time period,  $a_i$  denotes a country specific constant and  $\varepsilon_{i,t}$  is the error term. The dependent variable,  $WS$ , is the adjusted wage share. It is defined as the average compensation of employees times total employment (including self-employment) divided by GDP at factor costs, i.e. after indirect taxes.<sup>13</sup> Thereby, the wage share is being adjusted for the compensation of self-employed workers whose income is imputed based on the average wage of employees. The wage share is regressed on four financialisation variables that capture the exit options of capital ( $FIN^{EXIT}$ ), the financial payments of non-financial businesses ( $FIN^{NFCPAY}$ ), the competition in capital markets ( $FIN^{CAPCOMP}$ ), and household debt ( $FIN^{HHD}$ ). We further use a set of control variables to account for other factors that affect the wage share.

As labour market indicators we use union density ( $UD$ ) and the unemployment rate ( $U$ ).  $UD$  is calculated as the ratio of wage and salary earners who are members of a trade union to the total number of wage and salary earners. It captures the effects of a reduction in workers' bargaining power which are not explained by financialisation.  $U$  is defined as unemployed persons as a

---

<sup>12</sup> Table A5 in the appendix provides correlation coefficients between different measures of financialisation.

<sup>13</sup> Table A1 provides data definitions and sources.

share of the total labour force.<sup>14</sup> We use trade openness (*OPEN*), exports plus imports over GDP, as a measure of globalisation and thus (non-financial) exit options for capital, e.g. in the form of offshoring. To measure the effect of skill-biased technical change we employ the share of value added of the information and computer services sector in GDP (*ICT*). The expected sign of its coefficient is negative because it is assumed by mainstream authors that this kind of technical change reduces the income of unskilled workers, which make up a large share of the work force. *GRWTH* is the growth rate of real and serves as a business cycle measure. It is supposed to control for the countercyclicality of the wage share due to overhead costs and rigid wage incomes (Kalecki 1969, chap. 2).

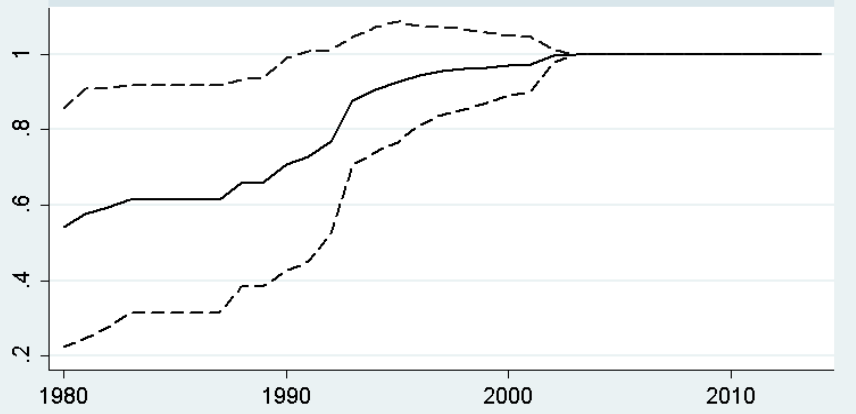
We use four distinct measures for financialisation to capture the different mechanisms involved. Where more than one variable is available to proxy a mechanism we estimate our baseline specification including each measures subsequently and then keep the one with the highest z-statistic. We aim for one variable per mechanism for symmetry and in order to avoid multicollinearity problems. For the exit option of capital highlighted by the bargaining power framework we consider financial globalisation (*FINGLOB*), financial openness (*FINOP*), and financial income of NFCs (*FININC*). We expect a negative effect on the wage share as these variables measure the exit options of capital. *FINGLOB* is defined as the logarithm of foreign assets plus foreign liabilities divided by GDP. This is an *ex post* economic measure. It has been used in Stockhammer (2009, 2017) and ILO (2011). *FINOP* is a *de jure* index for financial openness accounting for the presence of multiple exchange rates, restrictions on current account transactions and the requirement of the surrender of export proceeds developed by Chinn and Ito (2006). It is similar to the index used by Jayadev (2007). *FININC* is the sum of dividend and interest income of NFCs as a ratio to the value added of this sector and is thus close to the variable used by Lin and Tomaskovic-Devey (2013). Among these variables *FINOP* performed better than *FINGLOB* and *FININC* and thus is included in our baseline specification. Figure 2.1 shows the average of *FINOP* for our sample of 14 OECD countries from 1980 to 2014. It demonstrates that financial liberalisation has largely taken place between 1980 and 2002, while the highest degree of financial openness has been reached in 2003.

---

<sup>14</sup> We also considered other LMIs such as collective bargaining coverage and the gross replacement ratio. They were insignificant in our estimations and were consequently excluded from the analysis. The results can be found in Table A3 in the appendix.

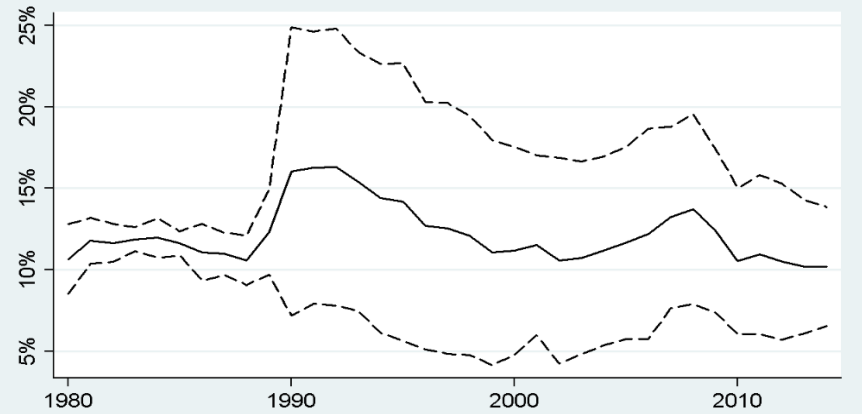
**Figure 2: Financialisation variables, 1980-2014**

**Figure 2.1: Financial openness index, 1980-2014**



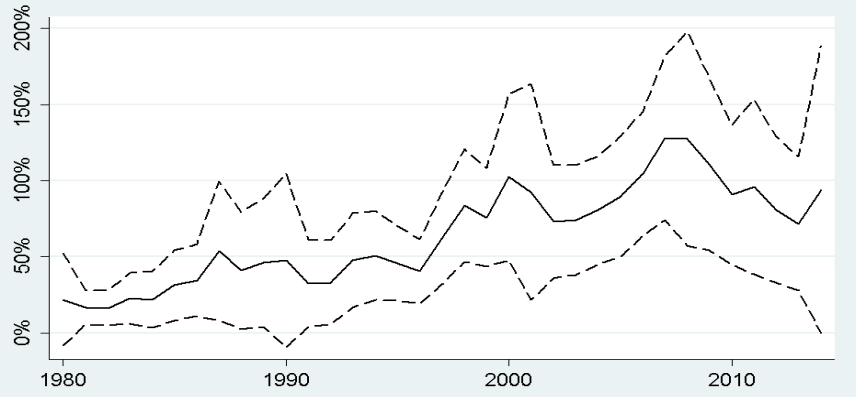
Data source: Chinn and Ito (2006)

**Figure 2.2: Net financial payments of NFCs, 1980-2014**



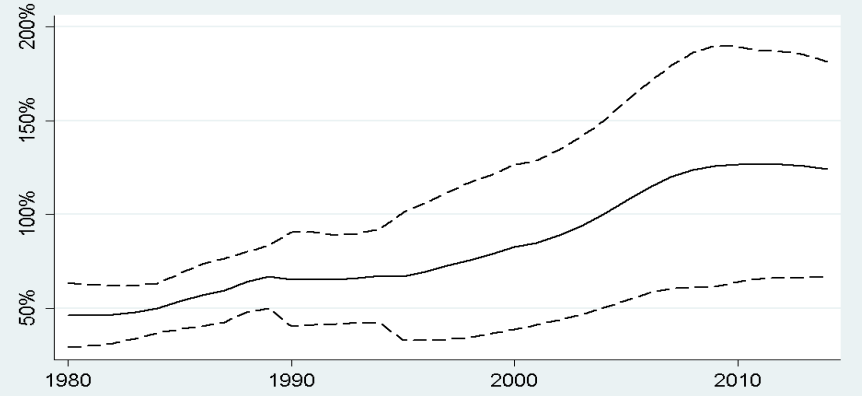
Data source: OECD

**Figure 2.3: Stock market turnover ratio, 1980-2014**



Data source: World Bank

**Figure 2.4: Household debt to disposable income, 1980-2014**



Data source: BIS

Note: Solid lines are unweighted averages over 14 OECD countries. Dotted lines are unweighted averages plus/minus one standard deviation. The strong increase in the cross-country variance of *FINPAY* in 1990 is due to an increase in the sample size in that year.

For the financial payments of non-financial firms we construct the measure *FINPAY*, which is the sum of net dividend payments and net interest payments of NFCs as a ratio to the value added of this sector. We sum interest and dividend payments as both factors should have the same effect according to the hypothesis of a financial cost elastic mark-up. Following the existing literature, we use net financial payments (Hein and Schoder 2011; Dühaupt 2016). The expected sign is negative because of the assumption that financial overhead costs are shifted onto the mark-up. Figure 2.2 shows the average *FINPAY* for our sample. The variable exhibits some volatility, with an increase between 1980 and 1992, and a declining trend between 1992 and 2014 which is largely due to falling interest payments in this subperiod. *FINPAY* peaked in 1992 at 16.3% of value added and decreased to 10.2% by 2014. However, the declining trend in the second half was interrupted by an intermediate phase of rising financial payments between the early 2002 and the financial crisis (2008).

The competition on capital markets has been highlighted by neo-Marxian authors and the corporate governance literature, but they have not operationalised this channel empirically. We measure it by the stock market turnover ratio (*STO*), which is defined as the total value of shares traded per year divided by the average market capitalisation. The variable is expected to have a negative impact on the wage share, since it expresses the competitive pressure of short-term oriented financial investors on firms to raise labour productivity and suppress wages. *STO* is only an indirect measure of this mechanism since it does not directly measure changes in the internal structure or behaviour of firms. Moreover, a variable measuring the velocity of bond trading would have been desirable to complement *STO* but is unfortunately not available. As depicted in Figure 2.3 the variable has a rising trend that started in 1982 at 16.4% and subsequently increasing to 128.1% in 2007. *STO* then sharply declined due to the financial crisis of 2007-2008 and only weakly recovered in 2014 to a value of 94.2%.

In order to account for a potentially negative impact of workers' debt on their bargaining power, we use household debt as percentage of the disposable income of households (*HHD*) as a proxy for workers' debt. The expected effect on the wage share is negative. Figure 2.4 shows *HHD* for our sample. A clear rising trend is visible starting from 46.2% in 1980 and peaking at 126.8% in 2010. In the last two years of our sample, *HHD* declined by a two percentage points.

### 3.2 Econometric method

The data set we use is an unbalanced panel consisting of 14 OECD countries<sup>15</sup> over the period 1990-2014 with all financialisation variables, and from 1980 to 2014 in specifications with only one financialisation variable each. Moreover, we include a dummy variable that assumes the value 1 in the period after the financial crisis in 2007 (*D-0814*) as it improves the explanatory power of the model.<sup>16</sup>

The panel approach is used due to the large number of variables and relatively short time series. Our panel has a small  $N$  and somewhat larger  $T$  ( $N=14$ ,  $T=25$ ). This is typical for macroeconomic panels and implies that we have to be more concerned about autocorrelation than microeconomic contributions that have a large  $N$  and small  $T$ . Our first tentative specification is a within-estimator in levels. Unit root tests, however, indicate that  $WS$ ,  $U$ , and  $UD$  are integrated of order one ( $I(1)$ ).<sup>17</sup> The level-specification is thus prone to spurious correlation problems. We therefore choose a first-difference estimator as our baseline specification. First differencing renders  $I(1)$  variables stationary and removes country-specific constants that can bias the coefficients and cause serial correlation in the residuals. Moreover, we first estimate a general specification with a lagged dependent variable<sup>18</sup> and a contemporaneous and lagged explanatory variable each. This allows us to capture lagged effects and reduces autocorrelation in the residuals, but we lose the first two periods. We then successively exclude either the contemporaneous or lagged variables with the lowest absolute  $z$ -statistic. The resulting specification constitutes our baseline specification.

---

<sup>15</sup> Austria, Belgium, Denmark, Finland, France, Germany, Greece, Italy, the Netherlands, Portugal, Spain, Sweden, the United Kingdom, and the USA. Due to data restrictions inclusion of non-OECD countries was not possible. The choice of countries is mainly due to data availability. Central and Eastern European countries were excluded to avoid distorting effects of the historically unique transformation from centrally planned to capitalist market economies. Our dataset starts with the onset of financialisation in 1980. We restrict our baseline sample to the period after 1989 to have at least five countries per period in the estimations.

<sup>16</sup> Our results are robust to the exclusion of this variable.

<sup>17</sup> Reported in Table A2 in the appendix.

<sup>18</sup> The inclusion of a lagged dependent variable in a first difference estimator leads to correlation between the lagged dependent variable and the error term which violates the exogeneity assumption. In order to deal with this problem, we apply an instrumental variable estimator using the first difference of the second lag of the dependent variables as an instrument for the first lag of the dependent variable.

We subject our baseline specification to several robustness checks. First, we estimate models with only one financialisation variable each. Notably this extends our maximum sample period from 1990-2014 to 1980-2014.<sup>19</sup> Second, we conduct robustness tests by adding various additional explanatory variables to our baseline model: *MIGR*, *VAFIN*, and *PPI*. Third, the baseline specification is estimated using an error-correction model (ECM), as well as 5-year non-overlapping averages, which are techniques for capturing long-run relationships as opposed to short-run effects.

#### **4. Econometric results**

The results of our main estimations are summarised in Table 3. Our baseline specification (1) is a first-difference estimator with a lag structure that has been obtained from a testing-down procedure. This accounts for problems of non-stationarity and serial correlation, which is confirmed by a test on the residuals that rejects the null hypothesis of autocorrelation of the first order. With respect to the financialisation variables, we find that *FINOP* and *FINPAY* are statistically significant at the 5% level and exhibit the expected negative effect. This corroborates the results of earlier studies with data prior to the Great Recession, which found statistically significant effects of *de facto* measures of financial globalisation (Jayadev 2007; ILO 2011; Stockhammer 2017), and financial payments of businesses (Hein and Schoder 2011; Dünhaupt 2016) who have tested these in specifications without other financialisation variables. We confirm these effects in a joint specification with several financialisation measures. We fail, however, to find evidence for a statistically significant effect of *STO* and *HHD*. While testing the effect of *STO* on the wage share is a novelty of this paper, our result for *HHD* is somewhat at odds with the studies of Wood (2017) and Guschanski and Onaran (2016) who found negative effects of *HHD* in single country estimations. However, both studies fail to find a negative effect when they pool the countries of their sample. This suggests that the effect of *HHD* on the wage share only prevails in some countries.

---

<sup>19</sup> The drawback is that our panel becomes more unbalanced as we have less than five countries in the earliest years of the sample.



**Table 3: Main estimation results**

Specification number	(1) (baseline)	(2)	(3)	(4)	(5)	(6)
Estimation method	First difference	First difference	First difference	First difference	First difference	First difference
<i>FINOP(-1)</i>	-2.700** (0.046)	-1.977* (0.072)				-3.108** (0.031)
<i>FINPAY(-1)</i>	-5.609** (0.042)		-4.242* (0.091)			-4.912* (0.074)
<i>STO(-1)</i>	-0.120 (0.468)			-0.260* (0.070)		-0.135 (0.428)
<i>HHD(-1)</i>	-0.052 (0.956)				-0.381 (0.668)	0.231 (0.806)
<i>U(-1)</i>	-13.904** (0.020)	-14.837** (0.010)	-15.123** (0.018)	-15.935*** (0.006)	-14.619** (0.025)	-17.161*** (0.006)
<i>UD(-1)</i>	-11.647 (0.154)	-4.534 (0.488)	-6.201 (0.453)	-4.170 (0.518)	-6.755 (0.429)	-7.114 (0.378)
<i>OPEN</i>	-6.721*** (0.000)	-6.207*** (0.000)	-5.882*** (0.000)	-6.412*** (0.000)	-5.567*** (0.000)	-6.820*** (0.000)
<i>ICT</i>	-67.176** (0.031)	-60.249** (0.038)	-76.186** (0.013)	-59.050** (0.046)	-74.256** (0.015)	-72.535** (0.019)
<i>ICT(-1)</i>	69.998** (0.013)	52.818* (0.071)	63.681** (0.022)	50.117* (0.089)	69.549** (0.013)	62.660** (0.027)
<i>GRWTH</i>	-15.988*** (0.000)	-18.552*** (0.000)	-18.527*** (0.000)	-18.697*** (0.000)	-18.442*** (0.000)	-16.343*** (0.000)
<i>D-0814</i>	0.369** (0.030)	0.228 (0.168)	0.254 (0.134)	0.286* (0.084)	0.228 (0.187)	0.330* (0.060)
<i>MIGR</i>						-8.580 (0.144)
<i>Countries</i>	14	14	14	14	14	14
<i>Observations</i>	265	352	289	347	290	252
<i>F-test</i>	17.082***	23.139***	21.963***	23.288***	19.218***	15.592***
<i>Adj.R<sup>2</sup></i>	0.430	0.398	0.408	0.399	0.403	0.449
<i>Period</i>	1992-2014	1982-2014	1982-2014	1982-2014	1982-2014	1992-2013

Notes: The dependent variable is the adjusted wage share. P-values are in parenthesis below the estimation coefficients. \*\*\*, \*\*, \* denote statistical significance at the 1%, 5% and 10% level. All standard errors were corrected for heteroscedasticity and autocorrelation. Note that the estimation period is two years shorter than the sample period due to the inclusion of differenced lagged explanatory variables.

With respect to the control variables we note statistically significant effects of *U*, *OPEN*, *ICT*, and *GRWTH*. The negative effects of *U* and *OPEN* constitute empirical support for the argument that the exit options of workers and firms are affected by the state of the labour market and the possibility of firms to offshore production (Kristal 2010). *ICT* enters our specification both as a contemporaneous effect and as a first lag. Both are statistically significant, but the contemporaneous effect is negative and the lagged effect is positive, while the size of the coefficients is of similar absolute magnitude. One may conclude that there is a negative effect as predicted by neoclassical theory (EC 2007, chap. 5; IMF 2007, chap. 4) but that the long-

term effect is close to zero.<sup>20</sup> *GRWTH* is statistically significant with the expected negative sign due to the countercyclical behaviour of the wage share.

Specifications (2)-(5) are robustness tests on the baseline model in which we include each financialisation variable separately. This exercise confirms the statistical significance of *FINOP* and *FINPAY* also for a substantially longer sample period (34 and 33 years, respectively). Moreover, we now find a statistically significant effect of *STO* (at the 10% level). For *HHD*, we again fail to reject the null hypothesis. In specification (6) we add a measure of labour migration (*MIGR*) defined as the change in the share of foreigners in the total labour force. Insofar as migrant workers are willing to work for lower wages than domestic workers, one would expect a negative effect. Indeed, this is often the underlying assumption behind political anti-immigration campaigns that have gained strong prominence recently. We observe that the effect of *FINOP* and *FINPAY* is robust to the inclusion of *MIGR* to the baseline model. *MIGR* turns out to be statistically insignificant, indicating that the mobility of capital, as captured by *FINOP*, rather than labour contributed to the decline in the wage share.

A further set of robustness tests is reported in Table 4. Specification (7) applies a simple within-estimator in levels with only contemporaneous effects. We note a statistically significant negative effect of *FINPAY* at the 5% level. The other financialisation variables are statistically insignificant. However, a unit-root test on the residuals suggests that these findings are not reliable (see Table A2 in the appendix). In specification (8), we replace *HHD* by *PPI*, a measure of property price inflation, which can be interpreted as an alternative measure for the financialisation of households. Given that several authors have argued that inequality leads to an increase in household debt (Barba and Pivetti 2009; Frank 2014), the coefficient for *HHD* may suffer from an endogeneity bias. *PPI* is constructed as the first difference of a real house price index. It is expected to pick up the dynamics of mortgage debt that is due to rising asset prices that serve as collateral. The variable is statistically insignificant, while leaving the other results unaffected. This supports our finding that *HHD* does not have a statistically significant effect and suggests that a possible endogeneity bias is negligible. Specification (9) adds the

---

<sup>20</sup> The zero-long-term effect was also confirmed by a Wald test. The presence of opposite signs on the contemporaneous and lagged effect may suggest using the second difference of *ICT*. We estimated such a specification, which did not change our results significantly.

value added of the financial sector relative to total value added (*VAFIN*) as a measure of the change in the sectoral composition of the economy towards finance. Hein (2015) points out that financialisation can depress wage shares simply because of sectoral change given that wage shares in the financial sector are typically below average. *FINOP* and *FINPAY* remain robust, while *VAFIN* is statistically insignificant. This indicates that the decline in the wage share is not merely driven by a change in the sectoral composition of the economy due to the relative growth of the financial sector.

Given that financialisation is conceived as a structural change of the economy, some of its effect on the wage share may materialise only over longer periods. The last two specifications aim to assess these long-run effects of our explanatory variables. Specification (10) constitutes an ECM. ECMs are used to disentangle short- and long-run effects that stem from cointegration relationships between the dependent and explanatory variables. We find a statistically significant negative long-run effect of *FINPAY* and of our control variables *U* and *OPEN*. The last specification (11) is based on 5-year non-overlapping averages to smoothen out short-run fluctuations. Here we confirm the effect of *FINPAY* again. Moreover, *STO* becomes statistically significant at the 5% level with the expected sign. Among the control variables, we observe statistically significant effects of *U* and *OPEN*. We thus find robust evidence for a long-term effect of *FINPAY*, as well as *U* and *OPEN* on the wage share. This suggests that financial overhead costs have a long-lasting effect on mark-ups. *FINOP*, in contrast, only exhibits short-run effects. One may conclude that the firing threat due to enhanced exit options of firms loses its credibility in the medium-run. This could be the case if the threat to relocate has a stronger distributional impact than the relocation itself. However, due to the relatively short time period of our sample, we consider the coefficients of our short-run baseline specification (1) more reliable.

**Table 4: Robustness tests**

<i>Specification number</i>	(7)	(8)	(9)	(10)	(11)
<i>Estimation method</i>	Within	First difference	First difference	ECM	5-year averages
<i>FINOP</i>	0.186 (0.946)				0.815 (0.795)
<i>FINOP(-1)</i>		-2.847** (0.034)	-2.667** (0.048)	0.647 (0.897)	
<i>FINPAY</i>	-16.329** (0.035)				-28.444*** (0.006)
<i>FINPAY(-1)</i>		-4.430* (0.096)	-5.799** (0.040)	-27.641** (0.020)	
<i>STO</i>	-0.631 (0.166)				-1.704** (0.025)
<i>STO(-1)</i>		-0.185 (0.276)	-0.169 (0.336)	0.126 (0.900)	
<i>HHD</i>	1.482 (0.396)				2.135 (0.289)
<i>HHD(-1)</i>			-0.103 (0.923)	1.056 (0.493)	
<i>U</i>	-24.186*** (0.002)				-22.707** (0.035)
<i>U(-1)</i>		-14.943*** (0.009)	-11.750 (0.142)	-61.779*** (0.000)	
<i>UD</i>	-1.002 (0.926)				2.328 (0.858)
<i>UD(-1)</i>		-12.364 (0.132)	-12.433 (0.142)	-31.193** (0.024)	
<i>OPEN</i>	-9.123** (0.016)	-6.167*** (0.000)	-6.114*** (0.000)		-11.615** (0.046)
<i>OPEN(-1)</i>				-8.279* (0.081)	
<i>ICT</i>	-92.493 (0.354)	-74.018** (0.017)	-75.952** (0.021)		-19.719 (0.864)
<i>ICT(-1)</i>		63.175** (0.026)	66.317** (0.019)	-168.308* (0.068)	
<i>GRWTH</i>	-24.899*** (0.002)	-17.547*** (0.000)	-18.181*** (0.000)		-3.463 (0.856)
<i>PPI</i>		0.018 (0.408)			
<i>VAFIN</i>			-6.455 (0.672)		
<i>D-0814</i>	0.429 (0.405)	0.430** (0.012)	0.314* (0.089)		1.432 (0.200)
<i>constant</i>	77.542*** (0.000)			19.168*** (0.000)	75.163*** (0.000)
<i>Countries</i>	14	14	14	14	14
<i>Observations</i>	269	258	241	260	68
<i>F-test/Wald test</i>	15.281***	16.877***	13.350***	152.39***	5.828***
<i>Adj. R<sup>2</sup></i>	0.282	0.439	0.420	0.484	0.070
<i>Period</i>	1992-2013	1992-2014	1992-2014	1992-2013	1994-2013

Notes: The dependent variable is the adjusted wage share. P-values are in parenthesis below the estimation coefficients. \*\*\*, \*\*, \* denote statistical significance at the 1%, 5% and 10% level. All standard errors were corrected for heteroscedasticity. Only the long-run coefficients of the ECM are reported (for the short-run coefficients, see Table A6 in the appendix).

Finally, we investigate the economic significance of our variables by calculating standardised coefficients. These coefficients allow us to compare the relative effect size of the different explanatory variables as they transform variables into the same unit.<sup>21</sup> Equation (2) represents our baseline first-difference specification with standardised coefficients. Among the financialisation variables, *FINOP* has the strongest effect. An increase in the rate of change of *FINOP* by one standard deviation reduces the rate of change of the wage share by about 0.11 percentage points. *FINPAY* exhibits the next largest effect with an increase in the rate of change by one standard deviation reducing the rate of change of the wage share by about 0.1 percentage points. The economic effects of *STO* and *HHD* are comparably low, which corresponds to the finding that these variables are statistically insignificant. Among the control variables we note a comparably strong effect of *GRWTH*, which stems from the countercyclical behaviour of wages and salaries. Economically more interesting is the relatively large effect (0.28) of *OPEN*, which points to the relevance of trade globalisation for the decline of the wage share. *U* also has a sizeable effect (0.16) which confirms the hypothesis that a high unemployment rate worsens the exit options of workers. For *ICT*, we use the sum of the contemporaneous effect and the first lag which exhibit opposite signs in specification (2). The effect is very small compared to the other variables which confirms our presumption that its long-run effect is close to zero. Taking all financialisation variables together, we obtain a negative effect of -0.25, which is in the same order of magnitude as *OPEN*, and larger than the effect of *U*.

$$(2) \quad \Delta LQ_{it} = -0.114\Delta FINOP_{it-1} - 0.099\Delta FINPAY_{it-1} - 0.035\Delta STO_{it-1} \\ - 0.002\Delta HHD_{it-1} - 0.155\Delta U_{it-1} - 0.092\Delta UD_{it-1} - 0.276\Delta OPEN_{it-1} \\ + 0.004\Delta ICT_{it-1} - 0.354\Delta GRWTH_{it}$$

Our main result is that financialisation indeed has contributed to the decline in the wage share through different channels. We find support for the effects of *FINOP* and *FINPAY*. Among the financialisation variables, *FINOP* displays the strongest economic effect. Moreover, there is evidence that the effect of *FINPAY* also prevails over longer time periods, and its economic effect is comparatively large. *STO* is statistically significant in some specifications but less

---

<sup>21</sup> Standardised coefficients are obtained by multiplying the estimated coefficients by the standard deviations of the respective explanatory variables and dividing by the standard deviation of the wage share. They imply that all transformed variables have a mean of zero and a standard deviation of one. They indicate by how many standard deviations the wage share changes for a one standard deviation change in the explanatory variable.

robust. Its economic effect is relatively low. We fail to find evidence for effects of *HHD*. For the control variables, we find statistically significant effects of *U* and *OPEN*, whereas *ICT* does not display robust effects.

## **5. Conclusion**

The era of financialisation has been accompanied by a substantial decline in the wage share. This paper analyses the link between financialisation and functional income distribution. It provides a theoretical clarification by identifying several channels linked to different approaches within heterodox Political Economy. We argue that financialisation is a multi-dimensional phenomenon whose different aspects may impact the wage share through distinct channels. Each channel comprises power relations between different classes: Financial openness impacts on the exit options of firms and mainly affects the balance of power between firms and workers; financial overhead cost and competition on capital markets in the first instance intensify the conflict between rentiers and firms, but may be resolved at the expense of workers. Lastly, household debt can affect working class identity and undermine workers' position in industrial conflict. The paper presents an empirical analysis in which these channels are operationalized and jointly tested by a panel regression analysis for 14 OECD countries over the period 1992-2014. We find strong effects of financialisation on functional income distribution which are, taken together, in the same order of magnitude as the effects of globalisation. International financial openness and financial payments of firms have the most robust negative impact on the wage share. Financial openness displays the largest economic effect, followed by financial payments of businesses. There is only weak evidence for the effect of competition on capital markets.

The main advantage of our approach in comparison to previous contributions is that we operationalise different channels and jointly assess the relative importance of different theoretical approaches, which helps identify potential policy interventions. This is not possible in estimations with only one measure of financialisation, as several of the channels are interlinked. Our results lend empirical support to theories of bargaining according to which the exit options of capital are enhanced by financial openness (Jayadev 2007; Stockhammer 2017), as well as to mark-up pricing theories in which the mark-up is elastic with respect to financial overhead costs (Hein 2015; Dünhaupt 2016). The shareholder value and neo-Marxian literature has linked increased competition on capital markets to downward pressure on wages (Martin et al. 2008; Bryan et al. 2009; Sotiropoulos and Lapatsioras 2014). We are the first to test this

channel empirically, but find only weak support. A possible negative effect of household debt on the wage share has been predicted in the models by Panico et al. (2012) and Kim et al. (2017). We have provided further theoretical justification for this channel by linking it to class consciousness and worker militancy. However, we do not find empirical evidence for this effect in our panel.

Our findings have several important policy implications. They indicate that the opening of domestic financial markets for foreign capital contributed to an erosion of the wage share. This is particularly interesting in conjunction with our finding of a negative effect of trade openness, and no significant effect of migration. Simply put, wages have stagnated because of an increase in capital mobility, not because of labour mobility. If that is correct, how should we de-financialise? First, reduce capital mobility. Besides progressive distributional effects, there are also benefits for financial stability. International capital flows are pro-cyclical and when they come in waves, they often end in financial crises (Reinhart and Reinhart 2009). Forbes et al. (2015) show that capital inflow controls can enhance financial stability by curbing private credit growth. Second, appropriately designed taxation and corporate regulation can decrease financial payments. This would not only encourage firms to invest in productive capacity rather than maximising shareholder value (Tori and Onaran 2017), but also improve income distribution. This could be achieved through higher taxation of dividend payments and capital gains, and by prohibiting share buybacks. Decoupling executives' remuneration from share prices and including representatives of employees and the wider public on company boards would support this process (Lazonick 2014). Lastly, Arcand et al. (2015) find that the link between finance and growth becomes negative when credit to the private sector reaches 80-100% of GDP. De-financialisation is thus a more effective measure for improving income distribution than the presently popular migration controls and can be macroeconomically beneficial in terms of stability and growth.

## References

- Admati, A. R. (2017) 'A Skeptical View of Financialized Corporate Governance', *Journal of Economic Perspectives*, **31** (3), 131-150.
- Alvarez, I. (2015) 'Financialization, non-financial corporations and income inequality: the case of France', *Socio-Economic Review*, **13**, 449-475.
- Anderloni, L., Bacchiocchi, E. and Vadone, D. (2012) 'Household financial vulnerability: an empirical assessment', *Research in Economics*, **66**, 284-296.
- Arcand, J.L., Berkes, E., Panizza, U. (2015) 'Too much finance?', *Journal of Economic Growth*, **20**, 105-148.
- Barba, A. and Pivetti, M. (2009) 'Rising household debt: Its causes and macroeconomic implications – a long-period analysis', *Cambridge Journal of Economics*, **33**, 113-137.
- Bassanini, A. and Manfredi, T. (2012) *Capital's Grabbing Hand? A Cross-Country/Cross-Industry Analysis of the Decline in the Labour Share*, OECD Social, Employment and Migration Working Papers No. 133, Paris, Organisation for Economic Co-operation and Development.
- Blanchard, O. and Giavazzi, F. (2003) 'Macroeconomic Effects of Regulation and Deregulation in Goods and Labor Markets', *The Quarterly Journal of Economics*, **118**, 879-907.
- Bryan, D., Martin, R. and Rafferty, M. (2009) 'Financialization and Marx: Giving Labor and Capital a Financial Makeover', *Review of Radical Political Economics*, **41**, 458-472.
- Chinn, M.D. and Ito, H. (2006) 'What Matters for Financial Development? Capital Controls, Institutions, and Interactions', *Journal of Development Economics*, **81**, 163-192.
- Choi, M. (2001) *Threat Effect of Foreign Direct Investment on Labor Union Wage Premium*, PERI Working Paper No. 27, Amherst, University of Massachusetts.
- Cynamon, B. and Fazzari, S. (2016) 'Inequality, the Great Recession and slow recovery' *Cambridge Journal of Economics*, **40**, 373-399.
- Dallery, T. (2009) 'Post-Keynesian theories of the firm under financialization', *Review of Radical Political Economics*, **41**, 492-515.
- Darcillon, T. (2015) 'How does finance affect labor market institutions? An empirical analysis in 16 OECD countries', *Socio-Economic Review*, **13**, 477-504.
- Demir, F. (2009) 'Financial liberalization, private investment and portfolio choice: financialization of real sectors in emerging markets', *Journal of Development Economics*, **88**, 314-24.



- Dünhaupt, P. (2016) 'The effect of financialization on labor's share of income', *Cambridge Journal of Economics* **41**, 283-306.
- EC (2007) *Employment in Europe 2007*, Brussels: European Commission
- Epstein, G. (2015) *Financialization: There's Something Happening Here*, PERI Working Paper 394, Amherst, MA, UMass Amherst.
- Flaherty, E. (2015) 'Top incomes under finance-driven capitalism, 1990-2010: power resources and regulatory orders', *Socio-Economic Review*, **13**, 417-447.
- Fligstein, N. and Goldstein, A. (2015) 'The emergence of a finance culture in American households, 1989-2007', *Socio-Economic Review*, **13**, 575-601.
- Forbes, K., Fratzscher, M., and Straub, R. (2015) 'Capital-flow management measures: What are they good for?', *Journal of International Economics*, **96**, S76-S97
- Frank, R.H., Levine, A.S. and Dijk, O. (2014) 'Expenditure Cascades', *Review of Behavioral Economics*, **1**, 55-73.
- Greenwood, R. and Scharfstein, D. (2013) 'The Growth of Finance', *Journal of Economic Perspectives* **27**(2), 3-28.
- Guschanski, A. and Onaran, Ö. (2016) *The Political Economy of Income Distribution: Industry Level Evidence from Austria*, Materialien zu Wirtschaft und Gesellschaft 156, Vienna, Kammer für Arbeiter und Angestellte.
- Guschanski, A. and Onaran, Ö. (2017) *The Political Economy of Income Distribution: Industry Level Evidence from 14 OECD countries*, Greenwich Papers in Political Economy 51, London, University of Greenwich.
- Guttman, R. (2016) *Finance-led Capitalism: Shadow Banking, Re-Regulation, and the Future of Global Markets*, New York, Palgrave Macmillan.
- Harrison, A. E. (2002) 'Has Globalization Eroded Labor's Share? Some Cross-Country Evidence', accessed at <http://www.iadb.org/res/publications/pubfiles/pubS-FDI-9.pdf> on February 12, 2016.
- Hein, E. (2012) *The Macroeconomics of Finance-Dominated Capitalism – and its Crisis*, Cheltenham, Edward Elgar.
- Hein, E. (2015) 'Finance-dominated capitalism and re-distribution of income: a Kaleckian perspective', *Cambridge Journal of Economics*, **39**, 907-934.
- Hein, E. and Schoder C. (2011) 'Interest rates, distribution and capital accumulation – A post-Kaleckian perspective on the US and Germany', *International Review of Applied Economics*, **25**, 693-723.

- ILO (2008) *World of Work Report. Income Inequalities in the Age of Financial Globalization*, Geneva, International Labour Organization.
- ILO (2011) *World of Work Report. Making Markets Work for Jobs*, Geneva, International Labour Organization.
- IMF (2007) *World Economic Outlook October 2007. Globalization and Inequality*, Washington, D.C., International Monetary Fund.
- IMF (2017) *World Economic Outlook: Gaining Momentum?*, Washington D.C., International Monetary Fund
- Jaumotte, F. and Osorio Buitron, C. (2015) *Inequality and Labor Market Institutions*, IMF Staff Discussion Note No. 15/14, Washington D.C., International Monetary Fund.
- Jayadev, A. (2007) 'Capital account openness and the labour share of income', *Cambridge Journal of Economics*, **31**, 423-443.
- Jensen, M. (2001) 'Value Maximisation, Stakeholder Theory, and the Corporate Objective Function', *European Financial Management*, **7**, 297-317.
- Jensen, M. and Meckling, W. (1976) 'Theory of the firm: managerial behavior, agency costs, and ownership structure', *Journal of Financial Economics*, **3**, 305-60.
- Kalecki, M. (1969) *Theory of Economic Dynamics*, New York, Monthly Review Press
- Kim Y. K., Lima, G.T., and Setterfield, M. (2017) *Political Aspects of Household Debt*, NSSR Working Paper 24/2017, New York, New School for Social Research.
- Kristal, T. (2010) 'Good Times, Bad Times: Postwar Labor's Share of National Income in Capitalist Democracies', *American Sociological Review*, **75**, 729-763.
- Kus, B. (2012) 'Financialization and Income Inequality in OECD countries: 1995-2007', *The Economic and Social Review*, **43**, 477-495.
- Lane, P. R. and Milesi-Feretti, G. M. (2007) 'The external wealth of nations mark II: Revised and extended estimates of foreign assets and liabilities, 1970-2004', *Journal of International Economics*, **73**, 223-250.
- Langley, P. (2007) 'Uncertain Subjects of Anglo-American Financialization', *Cultural Critique*, **65**, 67-91.
- Lapavistas, C. (2009) 'Financialised Capitalism: Crisis and Financial Expropriation', *Historical Materialism*, **17**, 114-148.
- Lapavistas, C. (2013) *Profiting Without Producing. How Finance Exploits Us All*, London, Verso.

- Lazonick, W. (2014) 'Profits Without Prosperity', *Harvard Business Review*, September 2014 Issue, accessed at <https://hbr.org/2014/09/profits-without-prosperity> on 14 December 2017.
- Lazonick, W., and O'Sullivan, M. (2000) 'Maximizing shareholder value: a new ideology for corporate governance', *Economy and Society*, **29**, 13-35.
- Lin, K.-H. and Tomaskovic-Devey, D. (2013) 'Financialization and U.S. Income Inequality, 1970–2008', *American Journal of Sociology*, **118**, 1284-1329.
- Martin, R., Rafferty, M. and Bryan, D. (2008) 'Financialization, Risk and Labour', *Competition & Change*, **12**, 120-132.
- Orhangazi, Ö. (2008) 'Financialisation and capital accumulation in the non-financial corporate sector: A theoretical and empirical investigation on the US economy: 1973–2003', *Cambridge Journal of Economics*, **32**, 863–886.
- Palley, T. I. (2007) *Financialization: What It Is and Why It Matters*, Levy Economics Institute of Bard College Working Paper No. 525, New York, Levy Economics Institute of Bard College.
- Panico, C., Pinto, A., and Anyul, M.P. (2012) 'Income distribution and the size of the financial sector: a Sraffian analysis', *Cambridge Journal of Economics*, **36**, 1455-1477.
- Reinhart, C. and Reinhart, V. (2009) 'Capital Flow Bonanzas: An Encompassing View of the Past and Present'. In Frankel, J.F. and Pissarides, C. (eds.) *NBER International Seminar on Macroeconomics 2008*, Chicago, University of Chicago Press.
- Rowthorn, R. (1999) 'Unemployment, wage bargaining and capital-labour substitution', *Cambridge Journal of Economics*, **23**, 413-425.
- Sotiropoulos, D. and Lapatsioras, S. (2014) 'Financialization and Marx: Some Reflections on Bryan's, Martin's and Rafferty's Argumentation', *Review of Radical Political Economics*, **46**, 87-101.
- Stockhammer E. (2004) 'Financialization and the slowdown of accumulation', *Cambridge Journal of Economics*, **28**, 719-41.
- Stockhammer, E. (2009) *Determinants of functional income distribution in OECD countries*, IMK Studies 5/2009, Düsseldorf, Institut für Makroökonomie und Konjunkturforschung.

- Stockhammer, E. (2013) 'Financialization and the Global Economy'. In Epstein, G.A. and Wolfson, M. (eds) *The Handbook of the Political Economy of Financial Crises*, Oxford, Oxford University Press, pp. 512-525.
- Stockhammer, E. (2015) 'Rising Inequality as a Root Cause of the Present Crisis', *Cambridge Journal of Economics*, **39**, 935-58.
- Stockhammer, E. (2017) Determinants of the wage share. A panel analysis of advanced and developing economies, *British Journal of Industrial Relations*, **55**, 3-33.
- van der Zwan, N. (2014) 'Making sense of financialization', *Socio-Economic Review*, **12**, 99-129.
- Tori, D., and Onaran, Ö. (2017) *The effects of financialisation and financial development on investment: Evidence from firm-level data in Europe*, Greenwich papers in political economy No. 44, London, University of Greenwich.
- Wood, J.D.G. (2017) 'The effects of the distribution of mortgage credit on the wage share: Varieties of residential capitalism compared', *Comparative European Politics*, **15**, 819-847

## Appendix

**Table A1: Data definition and data sources**

Variable	Abbreviation	Definition	Source	Note
Adjusted wage share	<i>WS</i>	Wage bill divided by GDP at factor cost. The wage bill includes the imputed income of self-employed workers.	AMECO	
Financial openness	<i>FINOP</i>	Index accounting for the presence of multiple exchange rates, restrictions on current account transactions and the requirement of the surrender of export proceeds	Chinn und Ito (2006)	
Financial globalisation	<i>FINGLOB</i>	Logarithm of foreign assets plus foreign liabilities divided by GDP	Lane and Milesi-Ferretti (2007)	Own calculation
Net financial payments of non-financial corporations	<i>FINPAY</i>	The sum of net dividend payments and net interest payments of NFCs as a ratio to the value added of this sector	Eurostat: Sector Accounts, <i>nasa_10_nf_tr</i> ; OECD: ANA, 14A	Own calculations based on Eurostat data for European countries and OECD data for non-European countries.
Net financial income of non-financial corporations	<i>FININC</i>	The sum of dividend and interest income of NFCs as a ratio to the value added of this sector.		When Eurostat data were not available for early years, data were extrapolated backwards based on the growth rate of the OECD series.
Stockmarket turnover	<i>STO</i>	Total value of shares traded per year divided by the average market capitalisation	World Bank, Global Financial Development Database	
Value added of the financial sector	<i>VAFIN</i>	Value added of the financial sector relative to total value added	KLEMS	
Property price inflation	<i>PPI</i>	First difference of the real house price index	OECD	Own calculation
Household debt	<i>HHD</i>	Household debt as percentage of the disposable income of households	BIS; OECD: ANA, 14A	Own calculation
GDP growth	<i>GRWTH</i>	Growth rate of real GDP	AMECO	Own calculation
Unemployment rate	<i>U</i>	Unemployed persons as a share of the total labour force	AMECO	
Union density	<i>UD</i>	Ratio of wage and salary earners who are members of a trade union to the total	OECD: Annual Labor Force Statistics	

		number of wage and salary earners (adjusted for non-active and self-employed members)		
Trade openness	<i>OPEN</i>	Exports plus Imports over GDP	AMECO	Own calculation
Value added of the information and computer services sector	<i>ICT</i>	Share of value added of the information and computer services sector in GDP	OECD	Own calculation
Migration	<i>MIGR</i>	Change in the share of foreigners in the total labour force	OECD	Based on data on foreign labour force by nationality. The series is unavailable for the USA where we relied on data on foreign labour force by country of birth. Data on foreign labour force were extrapolated using the growth rate of data on foreign population.

**Table A2: Unit root tests**

Variable	Fisher type unit root test (p-value)
<i>WS</i>	0.47
<i>FINOP</i>	0.70
<i>FINPAY</i>	0.49
<i>STO</i>	0.10
<i>HHD</i>	0.26
<i>U</i>	0.01
<i>UD</i>	0.14
<i>OPEN</i>	0.73
<i>ICT</i>	0.32
<i>GRWTH</i>	0.00
<i>PP</i>	0.03
<i>VALAD</i>	0.60
<i>Residuals</i>	0.97
$\Delta WS$	0.00
$\Delta FINOP$	0.00
$\Delta FINPAY$	0.00

$\Delta STO$	0.00
$\Delta HHD$	0.00
$\Delta U$	0.00
$\Delta UD$	0.00
$\Delta OPEN$	0.00
$\Delta ICT$	0.00
$\Delta GRWTH$	0.00
$\Delta PP$	0.00
$\Delta VALAD$	0.00
$\Delta Residuals$	0.00

Notes: The table reports p-values of Augmented Dickey Fuller unit root test with trend for variables in level, and drift for variables in first differences. The test is applied to each county individually, and then the test statistics are combined to calculate p-values for an overall test. The null-hypothesis is that all cross sections contain a unit root. Residuals denotes the residuals of specification (7), which uses the within-estimator.

**Table A3: Effects of additional LMI on the wage share**

Estimation method	First difference
<i>FINOP(-1)</i>	-2.998** (0.034)
<i>FINPAY(-1)</i>	-5.248* (0.076)
<i>STO(-1)</i>	-0.198 (0.275)
<i>HHD(-1)</i>	-0.305 (0.768)
<i>U(-1)</i>	-17.534** (0.044)
<i>UD(-1)</i>	-8.993 (0.282)
<i>OPEN</i>	-6.909*** (0.000)
<i>ICT</i>	-66.227** (0.049)
<i>ICT(-1)</i>	53.795* (0.071)
<i>GRWTH</i>	-15.534*** (0.000)
<i>D-0814</i>	0.422** (0.019)
<i>BARCOV</i>	-0.017 (0.365)
<i>GRR</i>	-0.010 (0.655)
<i>Countries</i>	14
<i>Observations</i>	221

<i>F-test</i>	13.757***
<i>Adj.R<sup>2</sup></i>	0.451
<i>Period</i>	1992-2011

Notes: The dependent variable is the adjusted wage share. P-values are in parenthesis below the estimation coefficients. \*\*\*, \*\*, \* denote statistical significance at the 1%, 5% and 10% level. All standard errors were corrected for. \*\*\*, \*\*, \* denote statistical significant at the 1%, 5% and 10% level. *BARCOV* is bargaining coverage (employees covered by collective (wage) bargaining agreements as a proportion of all wage and salary earners in employment with the right to bargaining) adjusted for the possibility that some sectors or occupations are excluded from the right to bargain; obtained from the ICTWSS Database. *GRR* is the gross replacement ratio, calculated as gross unemployment benefit levels as a percentage of previous gross earnings; obtained from the OECD. Both variables were linearly interpolated between existing years. For *GRR*, a series based on Average Production Worker wages (1970–2005) was extrapolated with the growth rate of *GRR* based on Average Worker wages (2001–2011).

**Table A4: Descriptive statistics**

Variable	Mean	Standard deviation	Minimum	Maximum
<b>WS</b>	64.529	3.885	53.207	75.298
<b>FINOP</b>	0.852	0.250	0	1
<b>FINPAY</b>	0.120	0.060	-0.024	0.322
<b>STO</b>	0.661	0.518	0.010	3.412
<b>HHD</b>	0.946	0.530	0.071	2.869
<b>U</b>	0.082	0.038	0.016	0.275
<b>UD</b>	0.388	0.225	0.075	0.839
<b>OPEN</b>	0.662	0.301	0.166	1.655
<b>ICT</b>	0.042	0.010	0.023	0.065
<b>GRWTH</b>	0.019	0.023	-0.096	0.076

Notes: The summary statistics are computed for the sample of 14 OECD countries over the period 1980-2014. WS is scaled from 0 to 100, while all other variables that are expressed in percentages are scaled between 0 and 1.

**Table A5: Pairwise Pearson correlation coefficients between explanatory variables**

	<b>FINOP</b>	<b>FINPAY</b>	<b>STO</b>	<b>HHD</b>	<b>U</b>	<b>UD</b>	<b>OPEN</b>	<b>ICT</b>	<b>GRWTH</b>
<b>FINOP</b>	1								
<b>FINPAY</b>	-0.277	1							
<b>STO</b>	0.261	0.071	1						
<b>HHD</b>	0.304	-0.572	0.136	1					
<b>U</b>	-0.132	0.150	-0.115	-0.239	1				



<b>UD</b>	-0.003	-0.190	-0.206	0.184	-0.112	1			
<b>OPEN</b>	0.182	-0.329	-0.241	0.383	-0.231	0.348	1		
<b>ICT</b>	0.249	-0.270	0.469	0.274	-0.218	-0.161	-0.231	1	
<b>GRWTH</b>	-0.001	-0.112	-0.012	-0.181	-0.247	0.058	-0.013	0.046	1

Notes: The correlation coefficients are computed for the sample of 14 OECD countries over the period 1992-2014.

**Table A6: Short-run effects of ECM (specification 10)**

<i>Adjustment speed</i>	-0.202***
	(0.000)
<i>U</i>	-6.456
	(0.265)
<i>UD</i>	7.478
	(0.350)
<i>OPEN</i>	-5.625***
	(0.000)
<i>ICT</i>	-27.337
	(0.431)
<i>FINOP</i>	2.069
	(0.268)
<i>FINPAY</i>	-4.848
	(0.113)
<i>GRWTH</i>	-16.056***
	(0.000)
<i>STO</i>	-0.069
	(0.718)
<i>HHD</i>	-1.375
	(0.395)
<i>D-0814</i>	0.040
	(0.877)

Notes: The dependent variable is the adjusted wage share.

P-values are in parenthesis below the estimation coefficients.

\*\*\*, \*\*, \* denote statistical significance at the 1%, 5% and 10% level.